

## Gas Cage Assembly Instructions

### Introduction

Assembling your gas cage has never been easier.

A team of two people can assemble a cage in 20-30 minutes, including unpacking and tidying up time.

Each standard cage is supplied flat packed, consisting of 5 panels, with a minimum of 6 bolts included for bolting the cage together. Floor / Wall fixing bolts are NOT included.

#### Tools Required:

- 2 People
- Spanner/Socket Set
- Protective Gloves

### Panels

Before you begin, separate the panels out into:

- **Door** - Front
- **Rear** - Same Size as door
- **Side panels x 2** - Same size
- **Top Panel**

It is easiest to begin with the rear and side panels, then placing on the door, and finishing with the roof/top panel.

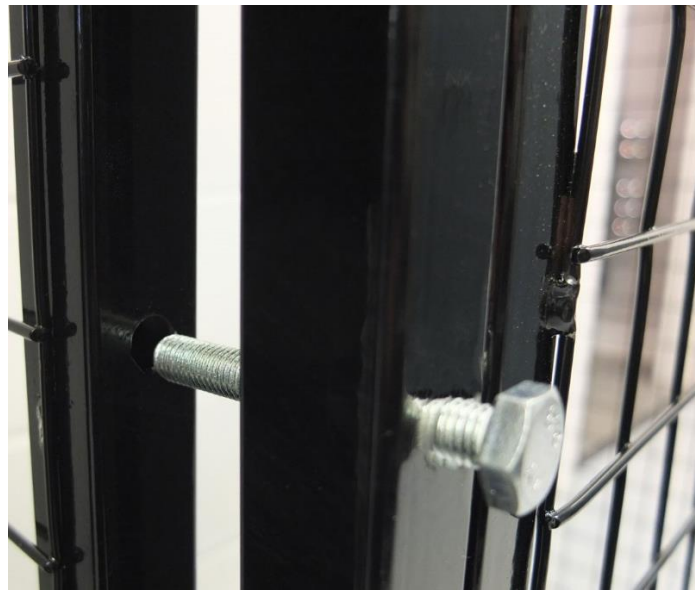
Please see the second page for image instructions.

### Written Instructions

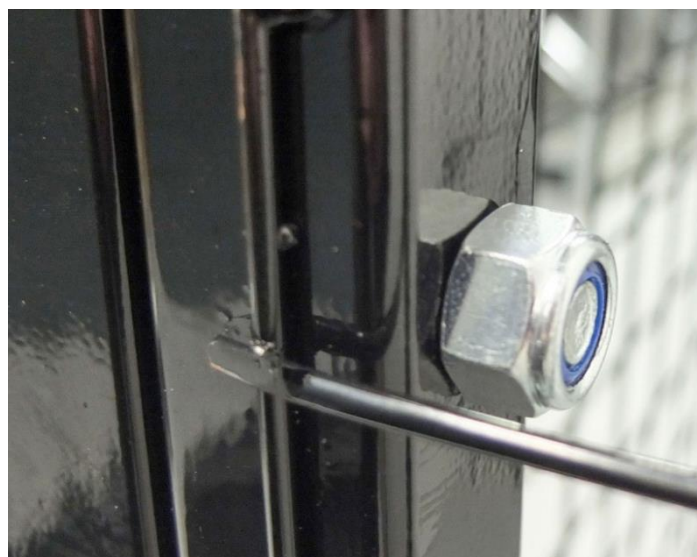
1. Place the **rear panel** against a wall, or supported by a second person. Ensure that the bolt holes are facing forwards, with the box frame facing inward. The mesh should be on the **outside**.
2. Place the first **side panel** against the rear panel, aligning the bolt holes. Fix with the bolts and nuts provided, ensuring nuts are fixed on the **inside**. Repeat on the opposite side.
3. Offer the **door panel** to the side panels. Again, align the bolt holes and fix with the bolts and nuts provided. Ensure that the bolts are tight!
4. Place the roof panel on top, align the bolt holes and fix with the bolts and nuts provided. Check that all bolts are secure.

## Image Instructions

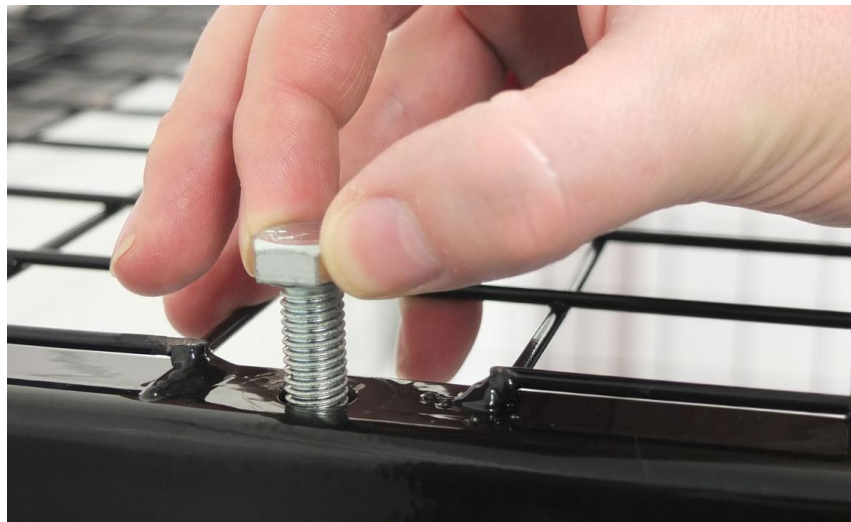
1. Place the **rear panel** against a wall, or supported by a second person. Ensure that the bolt holes are facing forwards, with the box frame facing inward. The mesh should be on the **outside**.



2. Place the first **side panel** against the rear panel, aligning the bolt holes. Fix with the bolts and nuts provided, ensuring nuts are fixed on the **inside**. Repeat on the opposite side.



3. Offer the **door panel** to the side panels. Again, align the bolt holes and fix with the bolts and nuts provided. Ensure that the bolts are tight!
4. Place the roof panel on top, align the bolt holes and fix with the bolts and nuts provided. Check that all bolts are secure.



5. If you are wall or floor mounting your cage now is the time to do so.
6. Secure your cage with a padlock (not included)

